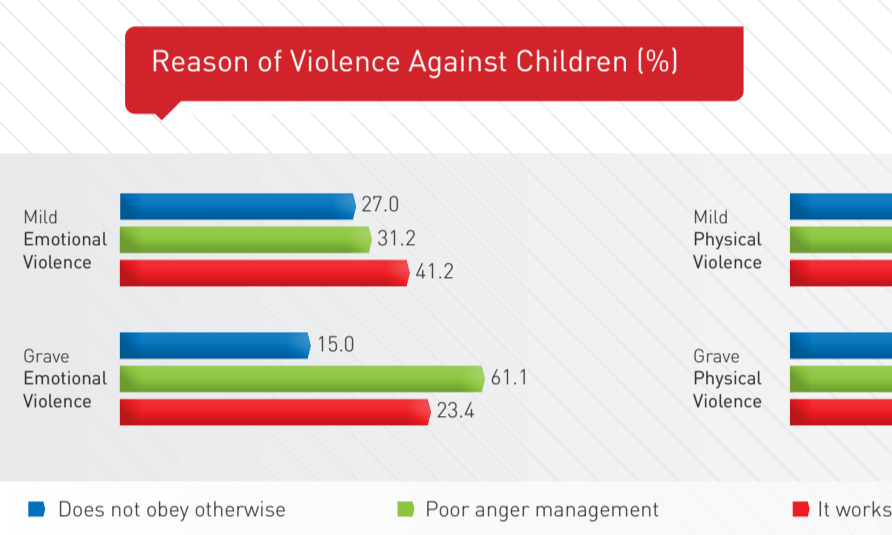
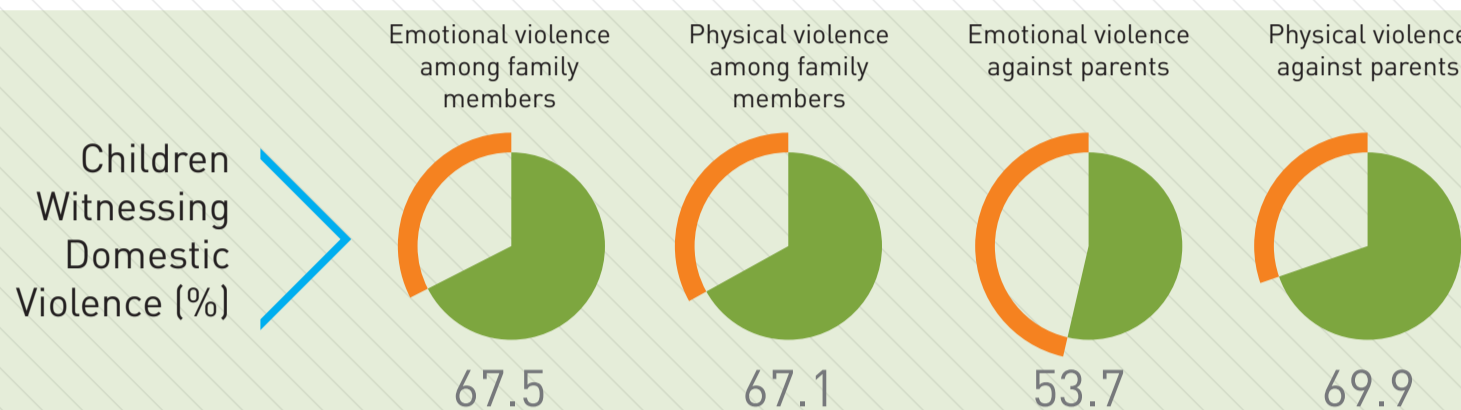
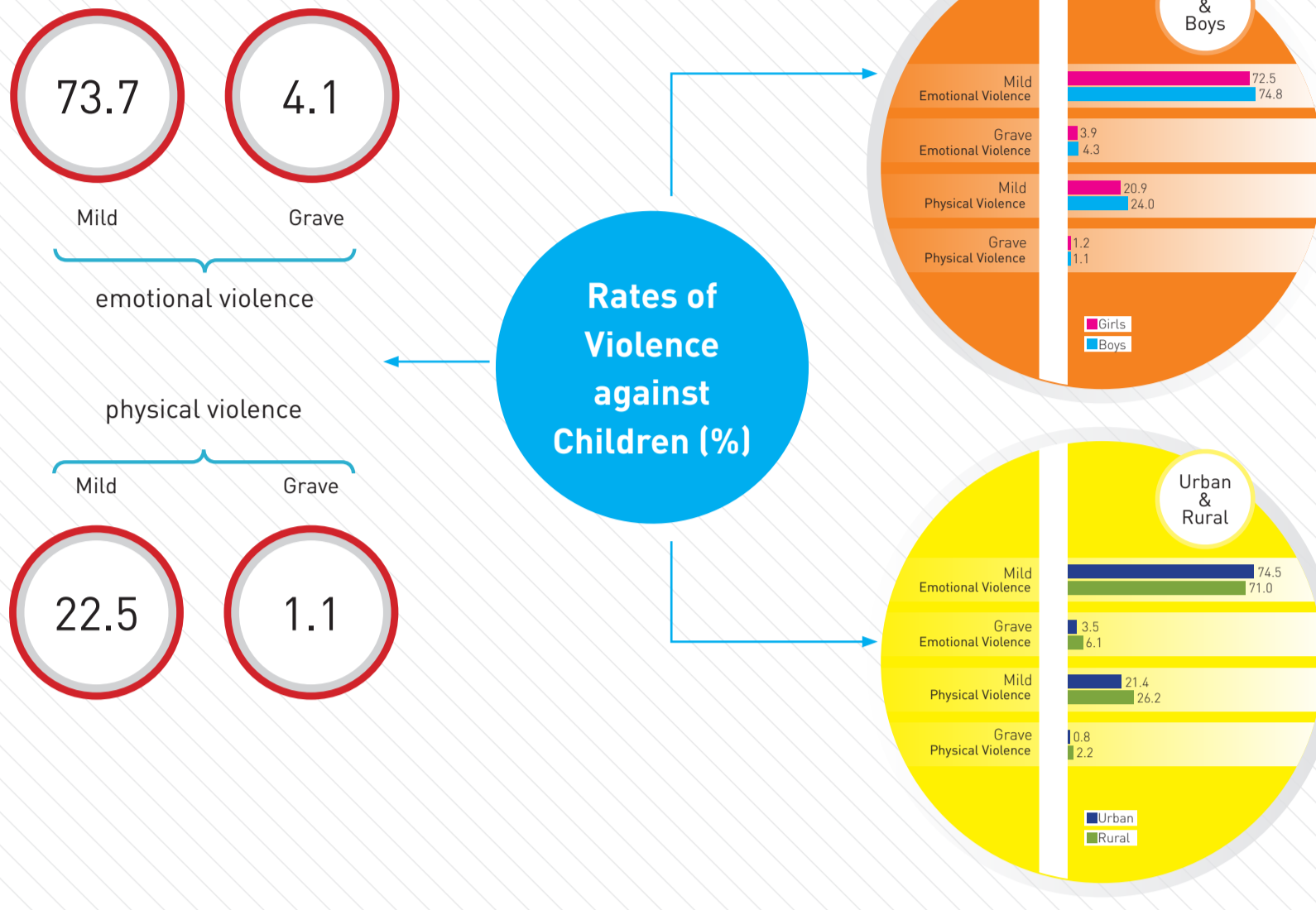
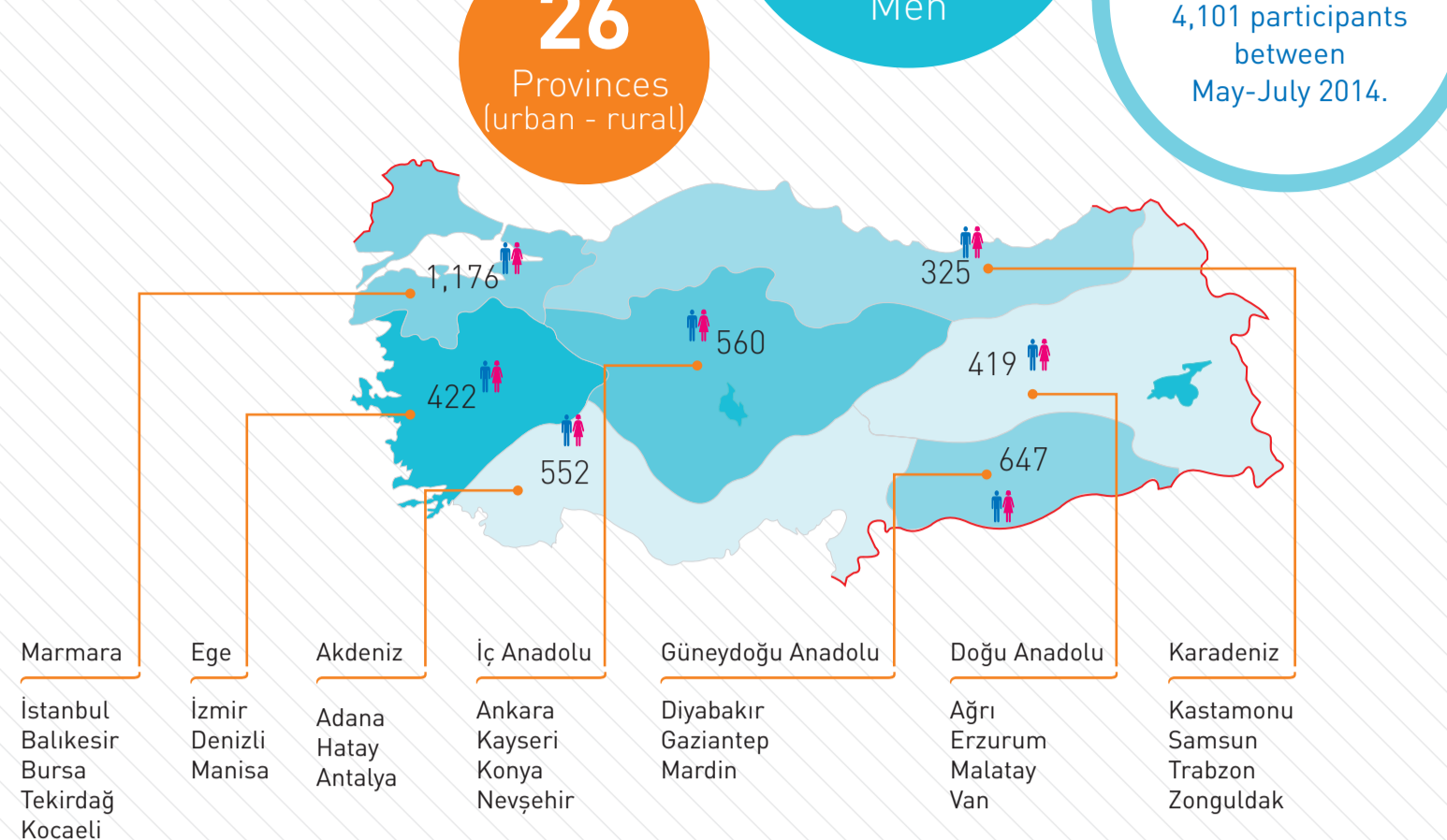


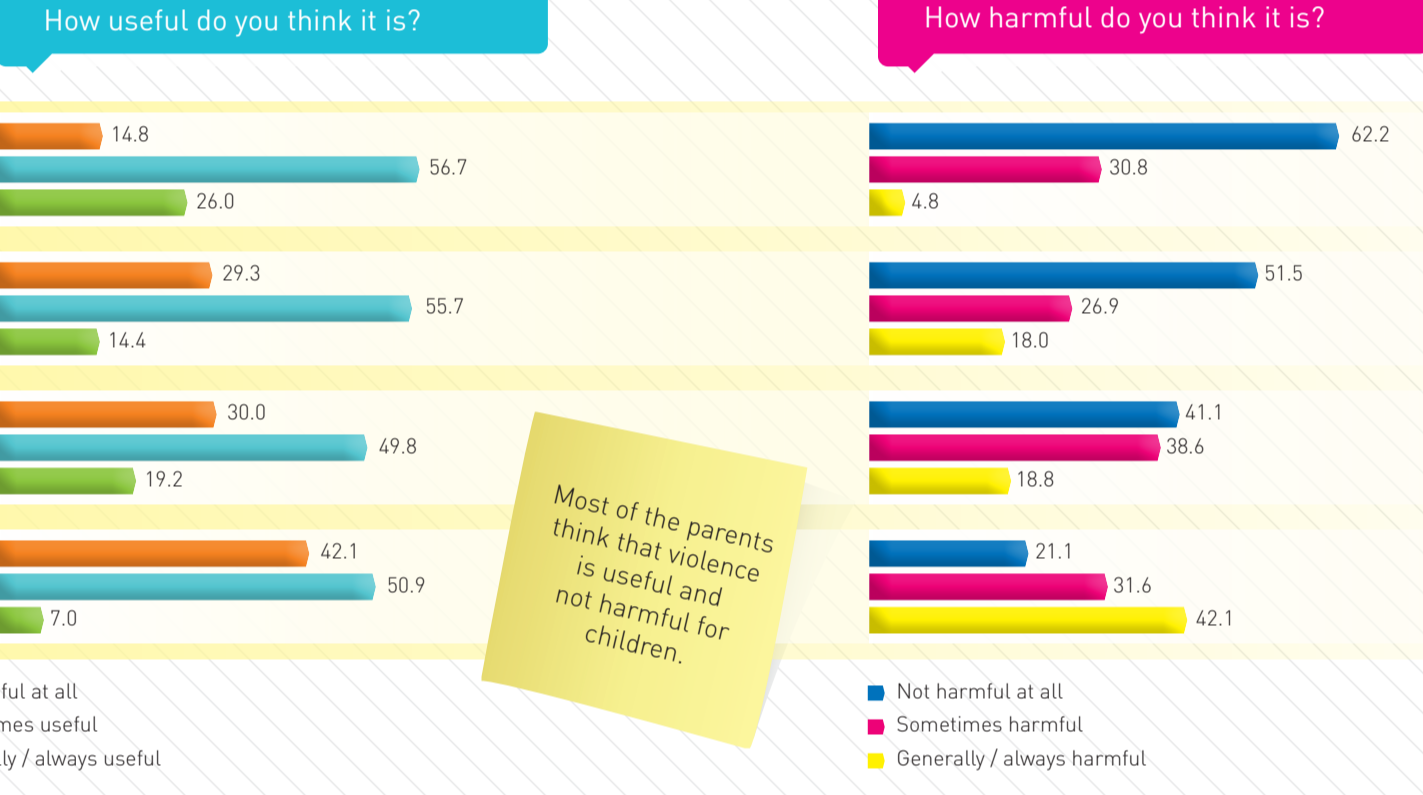
RESEARCH ON DOMESTIC VIOLENCE AGAINST CHILDREN AGED 0-8 IN TURKEY



Geographical Distribution of the Sample

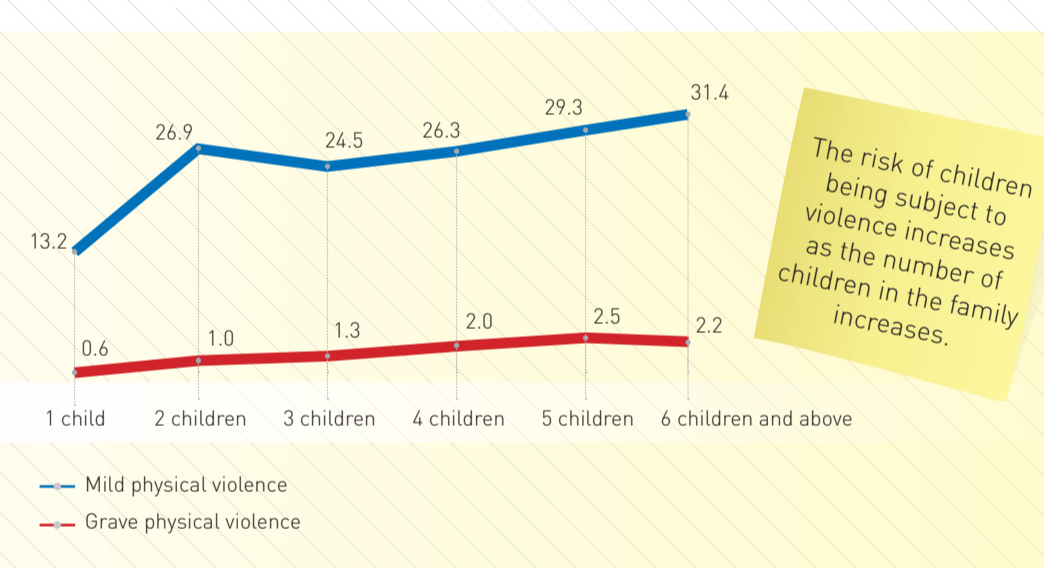
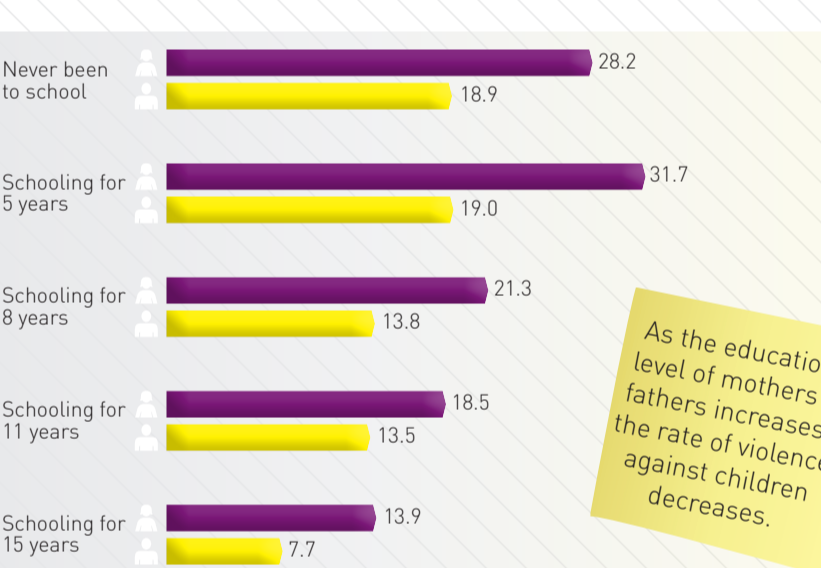


Parental Perceptions of Use/Harm of Violence (%)



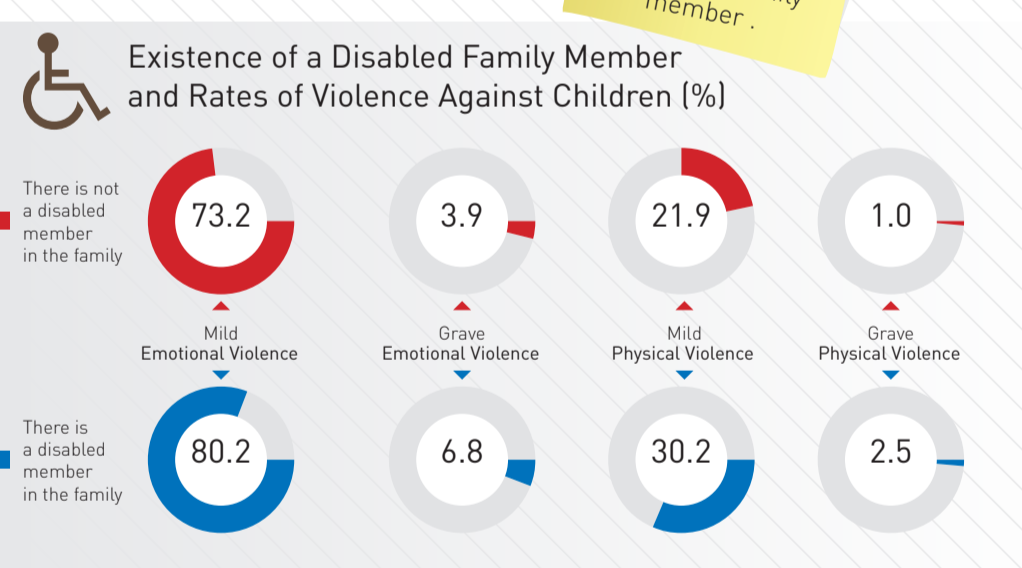
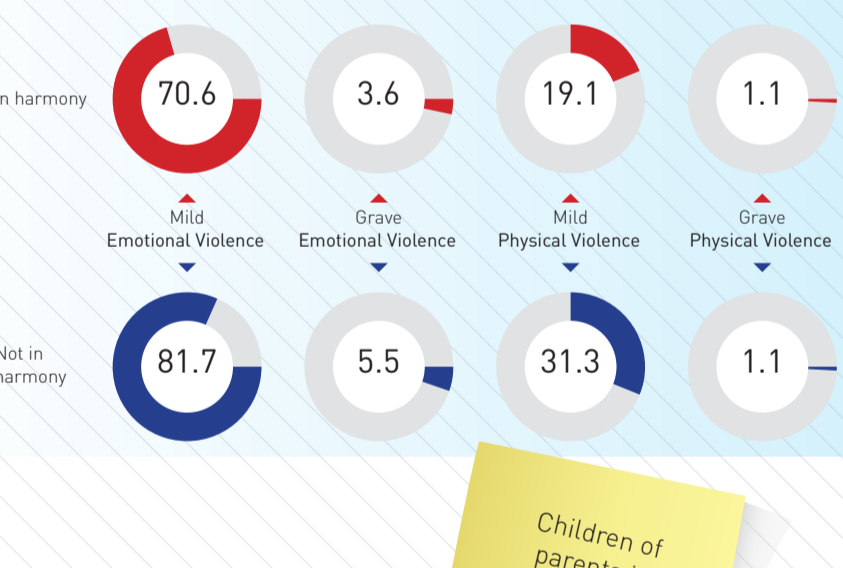
Parental Educational Status and Physical Violence Against Children (%)

Number of Children in the Family and Physical Violence Against Children (%)



Level of Harmony Between Parents and Rates of Violence Against Children (%)

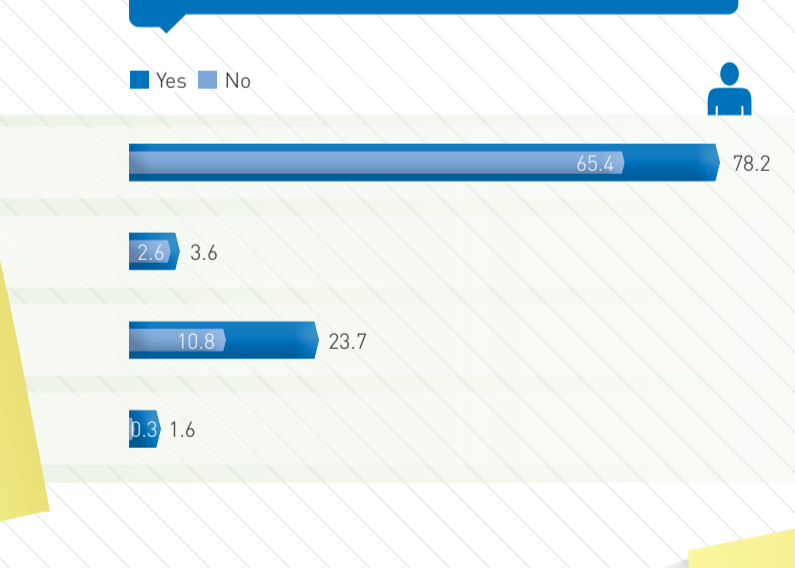
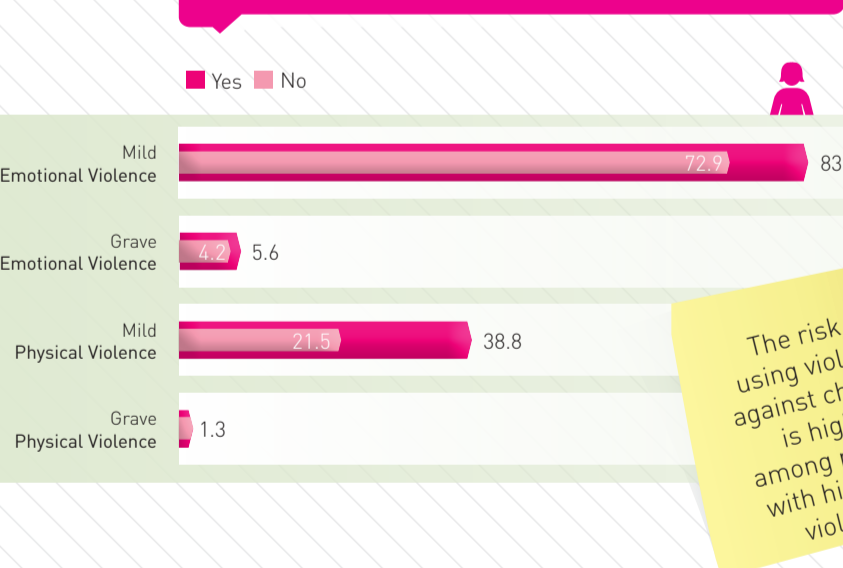
Existence of a Disabled Family Member and Rates of Violence Against Children (%)



Parental History of Violence and Rates of Violence Against Children (%)

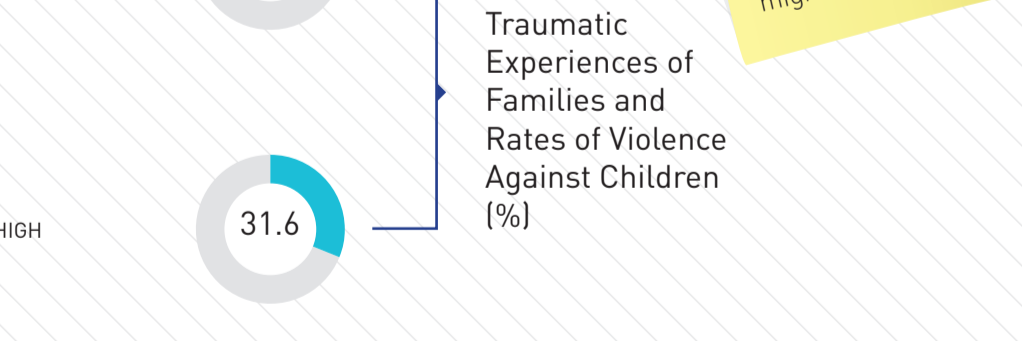
Past Experience of Physical Violence (Women)

Past Experience of Physical Violence (Men)



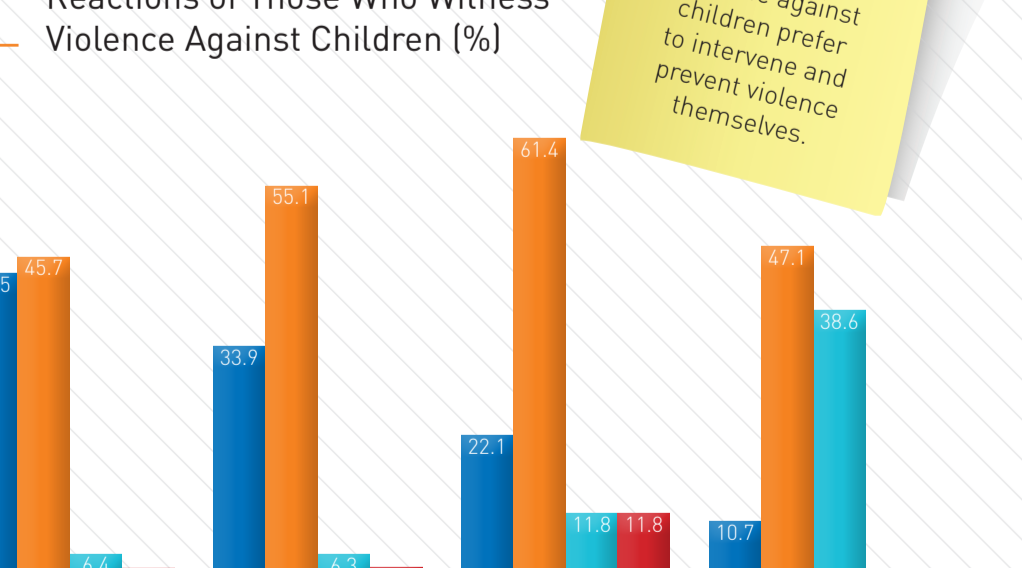
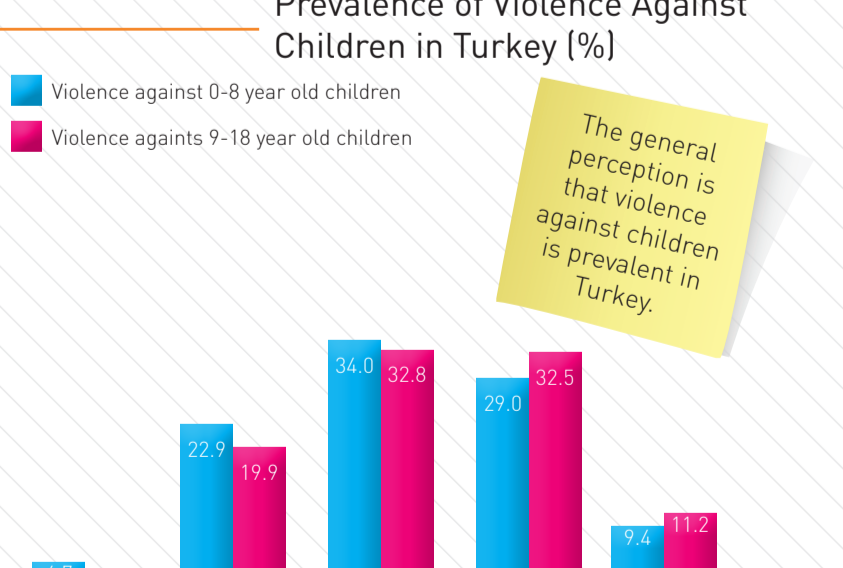
Welfare Level of Families and Rates of Violence Against Children (%)

Level of Traumatic Experiences of Families and Rates of Violence Against Children (%)

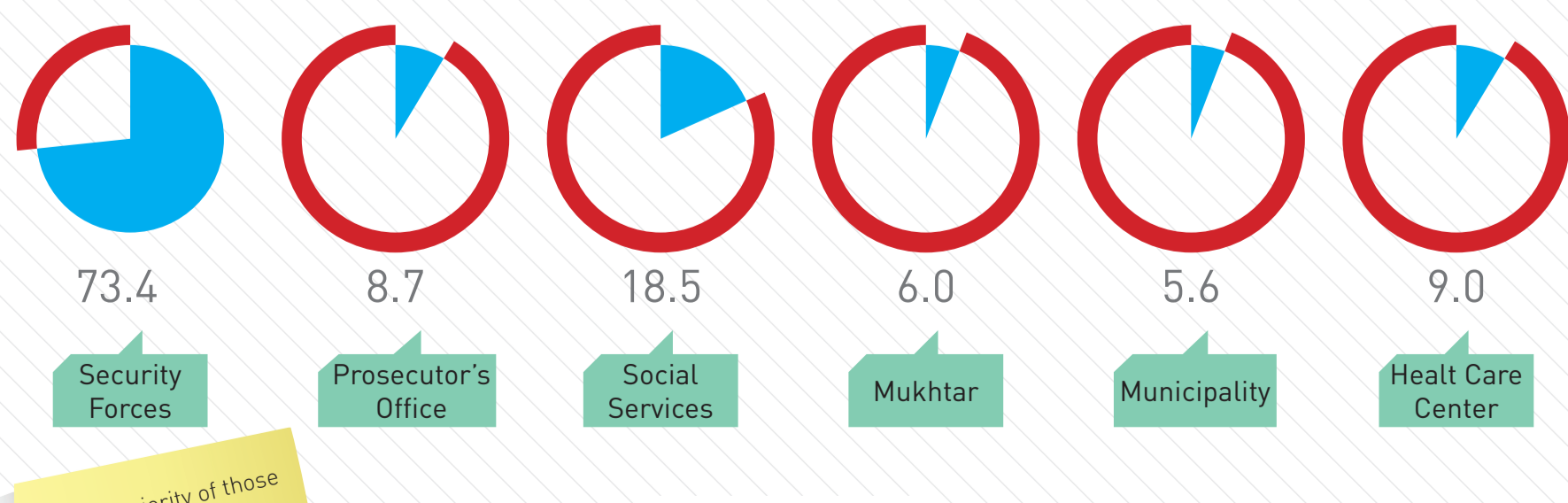


Perceptions About The Prevalence of Violence Against Children in Turkey (%)

Reactions of Those Who Witness Violence Against Children (%)



Institutions That Those Who Witness Violence Against Children Prefer to Apply (%)



www.ailecocuksiddet.info / info@ailecocuksiddet.info